

Traditional Dewatering for the Future

LARSSON™ Rotary vacuum filter is specially designed for dewatering starch slurry and to meet the high hygienic standards of today.

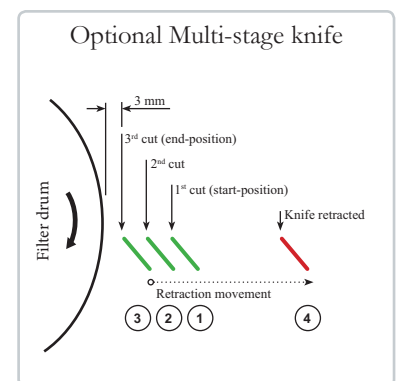
The starch is applied as a thin film on the drum and is then scraped of by the discharge knife for further transport to a dryer. The optional multi-stage movement of the knife guarantees a “long lifetime” of the pre-coat layer and a constant dry substance of the cake. The LARSSON™ Rotary vacuum filter is equipped with an effective down wash system.

Different sizes of LARSSON™ Rotary vacuum filters ensure a filter for every application and capacity.

We supply filters from 6 m² up to 60 m²

LARSSON™ Rotary vacuum filters can be equipped with different options such as:

- High pressure cleaning of drum
- Multi-stage knife movement
- Screw- or belt conveyor



LARSSON™ Rotary Vacuum Filter

GL13 | GL22 | GL32

Technical Information

LARSSON™ Rotary vacuum filters are fabricated of stainless steel AISI 304 (EN 1.4301).

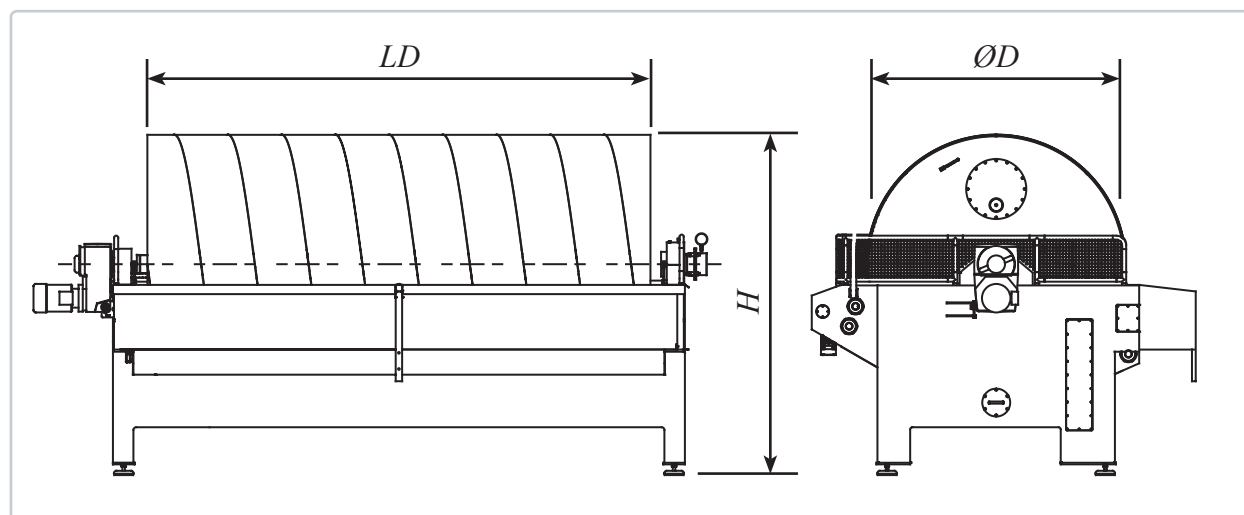
All components which are in contact with the product, are fabricated of stainless steel AISI 316 (EN 1.4401).

LARSSON offer various sizes to meet different flow capacity requirements.

For further technical information, contact LARSSON.

Model	Dewatering area	Capacity * Potato starch	Capacity * Tapioca starch	ØD	LD	H
GL32/60-60	60 m ²	24000 kg/h	12000 kg/h	3250	6000	3950
GL32/55-55	55 m ²	22000 kg/h	11000 kg/h	3250	5500	3950
GL32/50-50	50 m ²	20000 kg/h	10000 kg/h	3250	5000	3950
GL32/45-45	45 m ²	18000 kg/h	9000 kg/h	3250	4500	3950
GL32/40-40	40 m ²	16000 kg/h	8000 kg/h	3250	4000	3950
GL22/50-34	34 m ²	13600 kg/h	6800 kg/h	2240	5000	2940
GL22/45-31	31 m ²	12400 kg/h	6200 kg/h	2240	4500	2940
GL22/40-27	27 m ²	10800 kg/h	5400 kg/h	2240	4000	2940
GL22/35-24	24 m ²	9600 kg/h	4800 kg/h	2240	3500	2940
GL22/30-20	20 m ²	8000 kg/h	4000 kg/h	2240	3000	2940
GL22/25-17	17 m ²	6800 kg/h	3400 kg/h	2240	2500	2940
GL13/30-12	12 m ²	4800 kg/h	2400 kg/h	1285	3000	1985
GL13/25-10	10 m ²	4000 kg/h	2000 kg/h	1285	2500	1985
GL13/20-8	8 m ²	3200 kg/h	1600 kg/h	1285	2000	1985
GL13/15-6	6 m ²	2400 kg/h	1200 kg/h	1285	1500	1985

*) Native starch kg/h



G. Larsson Starch Technology AB, P.O. Box 89, SE-295 21 Bromölla, Sweden.

Visiting and delivery address: Kråkeslättvägen 8, SE 295 39 Bromölla, Sweden.

Phone: +46 456 48660, Telefax +46 456 22690,

E-mail: larsson@larssonsweden.com, Website: www.larssonsweden.com